

## Unit Type B3a – One Bedroom with Bay Window

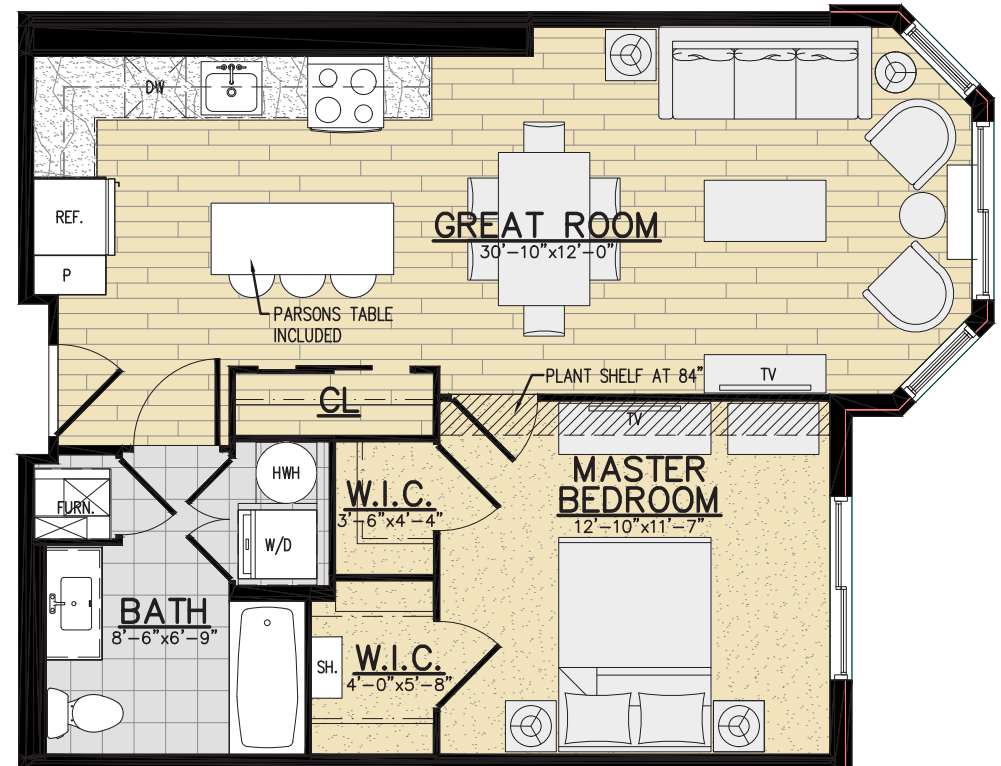
683 Square Feet

### Apartment Features

- Great Room encompassing Living, Dining and Kitchen
- Large Bay Window in Living Area
- Open Kitchen with Stainless Steel Appliances, Quartz Countertops & Island Parsons Table included
- Large Designer Bathroom with Contemporary Vanity and Wall-to-Wall Mirror
- Two Walk-in Closets & Extra Large Coat Closet
- Laminate Wood Flooring in Living Area and Premium Carpet in Bedroom
- Washer & Dryer in Unit

### Building & Community Features

- Beautiful Park Location on the Hudson River with River Walk, Monumental Sculptures, Waterfront Restaurant and Ferry Pier
- Located across from Metro-North Train Station
- Dramatic Lobby with 24 Hour Concierge Service
- Rooftop Club/Party Room, Pool & Sundeck with BBQ Stations
- Rooftop Fitness Center with Yoga/Motion Room
- Spa with River Views and Available Treatments
- Business Center with Conference Room
- Indoor Garage Parking
- On-Site Property Management
- Smoke Free & Pet Friendly with Dog Wash



\* All dimensions, square footage, layouts, window sizes and location are approximate and subject to change based upon construction and site variables. Before ordering furniture and decor items, it is recommended that all tenants personally measure their unit to confirm all dimensions.

#### On-site Leasing Center:

3 Westerly Road  
Ossining, NY 10562

1-914-945-0008  
email: harborsquare@gdcrentals.com  
www.gdcrentals.com

Date: \_\_\_\_\_

Apartment Number: \_\_\_\_\_

Rent: \_\_\_\_\_

Notes: \_\_\_\_\_